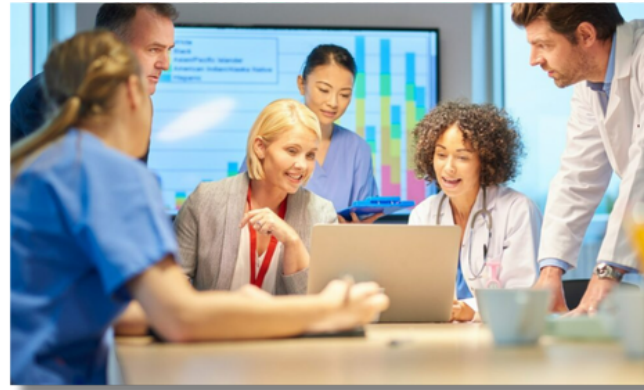


# PS Practice Support

## UPCOMING PROVINCIAL OFFERINGS



### SUMMER/FALL 2024 LIVE EVENTS

#### Behaviour Change Counselling NP/Physician Stream



- Program Duration - Sept 12th-Dec 12th
- Live Practice Workshops - Thursdays, Oct 10th, Nov 7th, Dec 12th 6:30-8:30pm
- Email: [PHCPracticeSupport@nshealth.ca](mailto:PHCPracticeSupport@nshealth.ca) to register

#### Mental Health First Aid

- Tuesdays Oct 22nd & 29th 12:30-4:30pm
- Note: 1-2 hours of self-directed learning is required prior to attendance
- Email: [PHCPracticeSupport@nshealth.ca](mailto:PHCPracticeSupport@nshealth.ca) to register

#### Physical Activity Counselling Workshops

- Live Virtual Education Sessions
- 2 dates available Sept 18th and Oct 17th at 8:30am
- Email: [PHCPracticeSupport@nshealth.ca](mailto:PHCPracticeSupport@nshealth.ca) to register

#### Adult Mental Health Practice Support Program



- 20 Weeks with 4 learning sessions (Sept .18th, Oct. 10th, Dec. 11th and Jan. 29th)
- 3 action periods & scheduled coaching
- To register click [HERE](#)

FOR MORE DETAILS AND REGISTRATION INFO, PLEASE VISIT:

[PHCQUALITY.CA](http://PHCQUALITY.CA)



## ADDITIONAL LEARNING AND SUPPORT



### SELF-DIRECTED LEARNING OPTIONS

Learning modules and other materials that you can use to learn at your own pace.



### TAILORED IN-PRACTICE SUPPORT

Our zone-based Practice Facilitators can provide in-practice support to help you and your team make and sustain improvements, using a QI approach.



### TOOLS & RESOURCES

Clinical and operational resources that are practical, evidence and experience informed, and tailored to PHC settings.



### 1:1 SUPPORT

Need a bit more direction or support to implement learnings into practice? Our Program Leads can meet with you to help clarify learnings or help you to navigate next steps in application.

PRACTICE SUPPORT AIMS TO ASSIST PHC PROVIDERS AND TEAMS TO DELIVER THE BEST POSSIBLE CARE TO NOVA SCOTIANS.

PRACTICE SUPPORT PROGRAMS ARE:



Quality Improvement focused



Evidence-based



Practical & clinically applicable

HAVE QUESTIONS? REACH OUT TO OUR PRACTICE SUPPORT TEAM:




[PHCQUALITY.CA](http://PHCQUALITY.CA)



[PHCPRACTICESUPPORT@NSHEALTH.CA](mailto:PHCPRACTICESUPPORT@NSHEALTH.CA)



Current Practice Support Programs - For more information visit: [www.PHCQuality.ca](http://www.PHCQuality.ca)

Program Name	Audience	Tools/ Resources	Self- Directed Learning	Additional Learning Opportunities	1:1 Support	
<a href="#">Behaviour Change Counselling Development Program</a>	All PHC Providers	✓	✓	✓	✓	✓
<a href="#">Physical Activity Counselling</a>	All PHC Providers	✓	✓	✓	✓	✓
<a href="#">Social Prescribing</a>	All PHC Providers	✓	✓		✓	
<a href="#">Diabetes Care Program of Nova Scotia (DCPNS)</a>	All PHC Providers	✓		✓	✓	
<a href="#">Opioid Use Disorder</a>	All PHC Providers	✓			✓	
<a href="#">Adult Mental Health</a>	Physicians/NPs	✓	✓	✓	✓	✓
<a href="#">Mental Health First Aid Certification</a>	PHC Admin Staff	✓	✓	✓		

Looking for resources to support your patients? Visit **HealthyNS.ca**



[PATIENT RESOURCES](#)



[PHCQUALITY.CA](http://PHCQUALITY.CA)



[PHCPRACTICESUPPORT@NSHEALTH.CA](mailto:PHCPRACTICESUPPORT@NSHEALTH.CA)

HAVE QUESTIONS? REACH OUT TO OUR PRACTICE SUPPORT TEAM:

